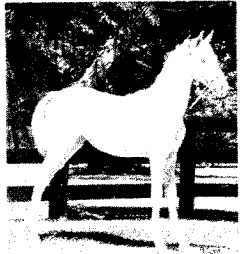


AMERICAN GAITED MOUNTAIN HORSE

CERTIFICATION OF REGISTRATION



MARE born 05/03/07

VBF CRYSTAL LITE

AG 016425

MAJORS CRYSTAL CREME

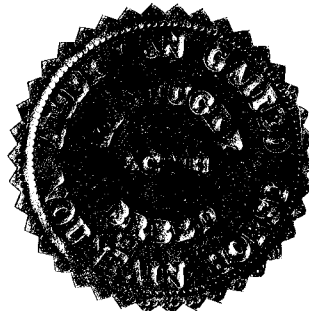
AG 013072
KM 200410404
TW 20308530/CR

JEWEL OF HEAT WAVE

THE STABLES ON HORSE FARM RD, Owner AG 012752
VAN BERT FARMS LLC, Breeder KM 200101112

**HERITAGE ANCESTRY = VERIFIABLE LINEAGE TO
RMHA OR MPHA BLOODLINES.**

STAR = More than 75% heritage ancestry
GOLD = more than 50% heritage ancestry
SILVER = 50% heritage ancestry
GREEN = less than 50% heritage ancestry



BROOK'S MAJOR COPY

TW 967937/PA

BROOKE'S CLASS ACT

LISA HALL

CRYSTAL PEGASUS ARHD

TW 19910270/PA

FLIP MY BIC

SPOTTED ALEN'S CRYSTAL

COUNTDOWN HEAT WAVE

UNKNOWN

EBONY'S COUNT DOWN

DELIGHTFUL DECISION

EB'S CROWN JEWEL

UNKNOWN

EBONY MASTERPIECE*(WGC)

PRIDE'S LADY JEWEL

Gary C. Case Sr.
GARY C. CASE SR
PRESIDENT

October 1, 2007